

Technical Data

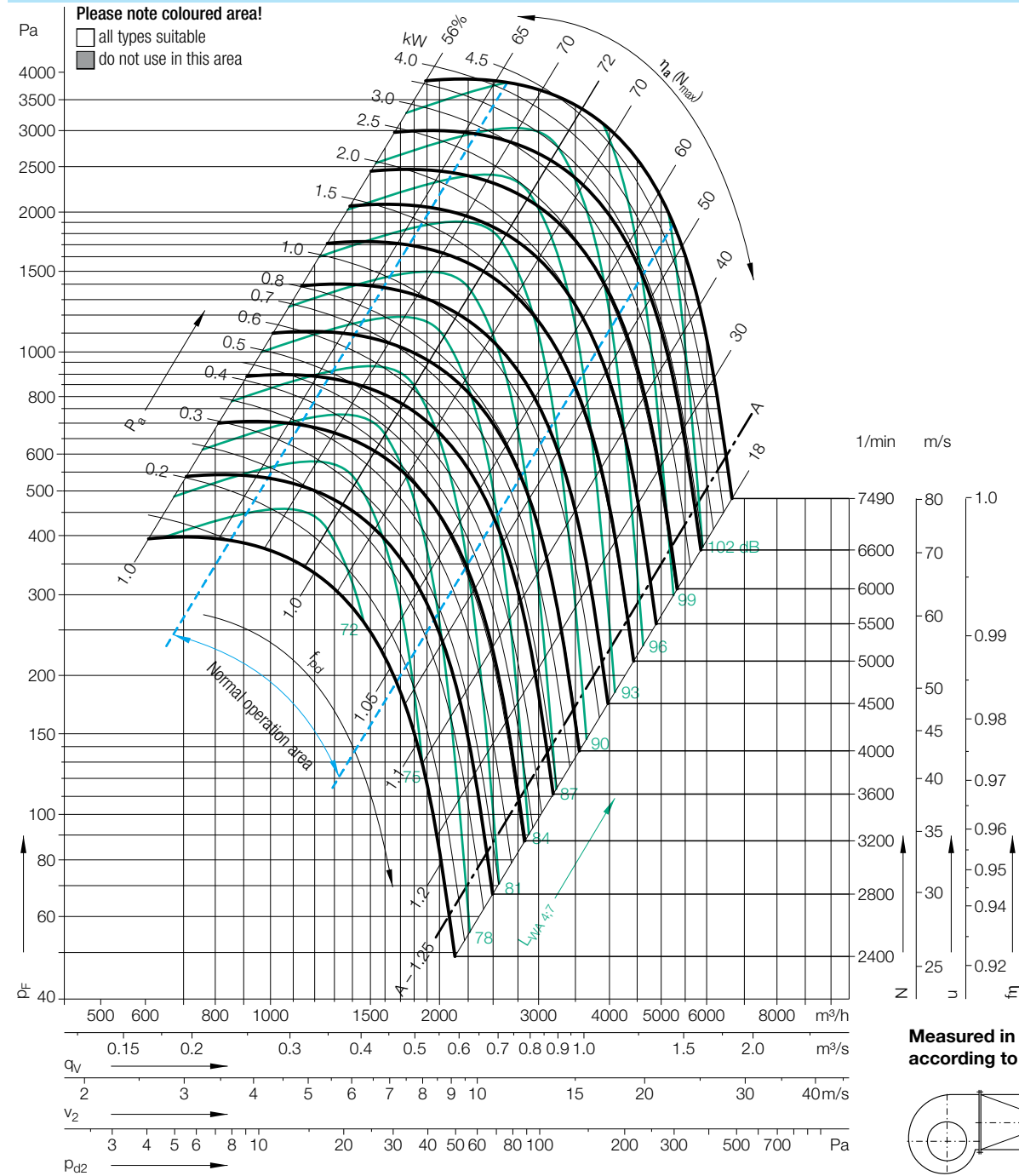
Impeller Data		
Impeller diameter	D_r	204 mm
Number of blades	z	11
Moment of Inertia	J	0.020 kgm ²

Impeller Data		
Impeller weight	m	2.7 kg
Density of media	ρ_1	1.2 kg/m ³
Tolerance class (DIN 24166)		2

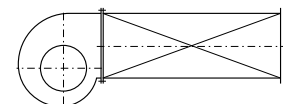
Speed limits N_{max} for ATEX execution

RZR 11/12/19	6513	1/min
--------------	-------------	-------

Performance Curves



Measured in installation B according to ISO 5801:



Relative sound power level for inlet side L_{Wrel7} at octave centre frequencies f_c

Speed	Duty point	63	125	250	500	1000	2000	4000	8000	Hz
≤ 3745 1/min	$\leq 0.8 q_{Vopt}$	-4	2	0	-2	-5	-10	-14	-21	dB
	$> 0.8-1.2 q_{Vopt}$	-7	0	-2	-2	-5	-9	-14	-22	dB
	$> 1.2-1.6 q_{Vopt}$	-10	-4	-4	-2	-4	-8	-15	-24	dB
	$> 1.6-2.0 q_{Vopt}$	-12	-7	-6	-2	-4	-8	-13	-24	dB
	$> 2.0 q_{Vopt}$	-15	-10	-11	-4	-4	-9	-12	-19	dB
> 3745 1/min	$\leq 0.8 q_{Vopt}$	-7	-1	-2	-2	-4	-10	-16	-23	dB
	$> 0.8-1.2 q_{Vopt}$	-12	-4	-5	-3	-4	-10	-15	-23	dB
	$> 1.2-1.6 q_{Vopt}$	-14	-7	-8	-4	-4	-9	-12	-21	dB
	$> 1.6-2.0 q_{Vopt}$	-15	-10	-11	-4	-4	-9	-12	-19	dB
	$> 2.0 q_{Vopt}$	-15	-10	-11	-4	-4	-9	-12	-19	dB

Relative sound power level for discharge side L_{Wrel4} at octave centre frequencies f_c

Speed	Duty point	63	125	250	500	1000	2000	4000	8000	Hz
≤ 3745 1/min	$\leq 0.8 q_{Vopt}$	11	8	3	-2	-8	-13	-19	-29	dB
	$> 0.8-1.2 q_{Vopt}$	7	5	1	-1	-7	-11	-18	-29	dB
	$> 1.2-1.6 q_{Vopt}$	5	3	-1	-1	-6	-9	-17	-20	dB
	$> 1.6-2.0 q_{Vopt}$	6	1	-2	-2	-6	-8	-14	-29	dB
	$> 2.0 q_{Vopt}$	6	1	-2	-2	-6	-8	-14	-29	dB
> 3745 1/min	$\leq 0.8 q_{Vopt}$	8	7	2	-2	-6	-11	-19	-28	dB
	$> 0.8-1.2 q_{Vopt}$	4	3	-2	-4	-6	-8	-15	-26	dB
	$> 1.2-1.6 q_{Vopt}$	2	0	-4	-5	-6	-8	-13	-24	dB
	$> 1.6-2.0 q_{Vopt}$	4	0	-4	-6	-6	-8	-12	-21	dB
	$> 2.0 q_{Vopt}$	4	0	-4	-6	-6	-8	-12	-21	dB